

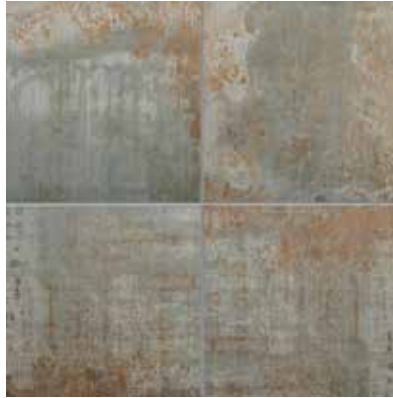
# Altered State

## Porcelain Stone<sup>®</sup>

### Color Palette



**AV341** ▶ White Hot



**AV342** ▶ Steel Gaze



**AV343** ▶ Acid Wash



**AV344** ▶ Copper Core



**AV345** ▶ Melting Point

### Features and Benefits

- Artfully mimicking the beauty of oxidized and aged steel, copper, iron, zinc, and chromium
- 6 x 24, 12 x 24, 24 x 24, and 2 x 12 sheet mounted mosaics add to design versatility
- All sizes are rectified and Crossville recommends a minimum of 3mm grout joint
- Available in 5 metal inspired colors
- Cross-Sheen<sup>®</sup> finish for easy cleaning
- Green Squared certified and made in the USA.



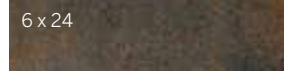
Floor:  
**AV341** ▶ White Hot 24 x 24 and  
**AV342** ▶ Steel Gaze 24 x 24 on floor  
Walls: Color By Numbers  
**WT02** ▶ Tea for Two 4 x 12 Gloss



# Altered State

## Porcelain Stone<sup>®</sup>

### Sizes Available in all colors



### Mosaics Available in all colors



2 x 12 Mosaics available in UPS. (Mounted on a 297 mm x 297 mm sheet.)

### Get Planked!

Our Porcelain Stone<sup>®</sup> products are available in popular plank shapes with no minimum order and quick fulfillment.

See website for more details and sizes.



### Sizes & Finishes

#### Field Tile - Rectified

Available in all colors

Nominal (in)	Actual (mm)	Thickness (mm)	Grout Joint (mm)	Finish
6 x 24	147 x 597	9.5	3	UPS
12 x 24	297 x 597	9.5	3	UPS
24 x 24	597 x 597	9.5	3	UPS

All field tile is rectified

Crossville recommends a minimum 3mm grout joint.

Please note: Tile is directional. Please install accordingly.

#### Mosaics

Available in all colors

Nominal (in)	Actual (mm)	Thickness (mm)	Grout Joint (mm)	Finish
2 x 12*	47 x 297	9.5	3	UPS

\* 2 x 12 mosaic is mounted on a 297 x 297 sheets with a 3mm grout joint. The 2 x 12 mosaic can be used in linear drain shower pans as long as the 12 inch side runs parallel to the drain.

#### Coordinating Trim

Available in all colors

Nominal (in)	Actual (mm)	Thickness (mm)	Grout Joint (mm)	Finish
6 x 24 Single Bullnose	147 x 597	9.5	3	UPS



6 x 24 Single Bullnose

#### Wet Dynamic Coefficient of Friction Range

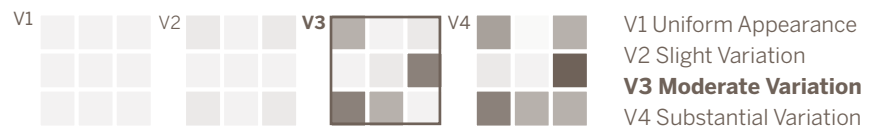
UPS	0.42 - 0.52	ANSI A326.3
-----	-------------	-------------

#### Product Performance

Breaking Strength	>450 lbf	ASTM C648
Bond Strength	>200 psi	ASTM C482
Chemical Resistance	Unaffected	ASTM C650
Frost Resistance	Resistant	ASTM C1026
Water Absorption	<0.50%	ASTM C373
Scratch Hardness	7	Mohs Scale

#### Shade & Texture Index

Altered State has a shade variation of V3.



This porcelain tile product is produced with a V3 variation. Expect that the amount of color and texture on each piece may vary significantly. Inspect the product upon delivery and for best results, blend tile from several cartons during installation.

#### Application Areas

Finish	Interior Floors (dry)	Interior Walls (wet/dry)	Exterior Walls	Interior Floors (Standing water/shower floors)	Exterior/Paving	Pool/Fountain Full Lining**	Water Line Pool/Fountains
UPS	✓	✓*	✓			✓	✓

\* The 2 x 12 mosaic can be used in linear drain shower pans as long as the 12 inch side runs parallel to the drain.

\*\* Excludes mesh mounted mosaics. Crossville recommends face mounted or edge mounted mosaics for fully submerged applications. Contact your Crossville sales representative for more information.

NOTE: Trim applications will differ from field tile applications for the same series.

For more information on ANSI- A362.3 visit our website at <https://www.crossvilleinc.com/Resources/Tile-101/DCOF?tab=1>



# Altered State

**Crossville, Inc.**

PO Box 1168  
Crossville, TN  
38557

**Phone** 931.484.2110  
**Fax** 931.456.2956  
**E-Mail** [Crossc@CrossvilleInc.com](mailto:Crossc@CrossvilleInc.com)  
**Web** [CrossvilleInc.com](http://CrossvilleInc.com)

## Recommended Use

Altered State is recommended for interior floors, interior walls, countertops, exterior walls, pool waterlines and full linings<sup>†</sup> in both residential and commercial applications. Altered State is not recommended for exterior horizontal surfaces or exterior paving. See [CrossvilleInc.com](http://CrossvilleInc.com) for detailed installation instructions.

<sup>†</sup>Excludes mesh mounted mosaics.

## Care and Maintenance

Regular cleaning is the best way to keep Altered State tile looking good for years to come. Use clean, hot water (combined with a household cleaner for more aggressive cleaning). Rinse thoroughly and dry with a soft cloth. No waxes are needed. More information regarding the care and maintenance of Crossville® products is available at [CrossvilleInc.com](http://CrossvilleInc.com).

*Information listed here is subject to change. Please refer to [CrossvilleInc.com](http://CrossvilleInc.com) for the latest, most accurate information.*

## Crossville® Sample Express

Visit the website to learn more:  
**[CrossvilleInc.com/Products/Altered-State](http://CrossvilleInc.com/Products/Altered-State)**

### Loose Tile Samples

Sizes may vary depending on product series  
Max. of 4 large field tile per order

### Standard Shipping

FedEx Ground

## National Accounts

For over 20 years we have been offering Porcelain tile to commercial customers at National Accounts pricing programs with special discounts. The National Accounts department provides materials forecasting, sales support and samples.

## CrossvilleInc.com

If you want a better idea of what Crossville tile would look like in a particular room setting, simply visit our website and click on Cross-Vision. This powerful software tool allows you to visualize different types of Crossville tile. In addition, you'll find comprehensive information about Crossville's entire portfolio of products. You can also learn about the latest styles and trends from industry experts, download detailed care and maintenance instructions for our various products, or browse electronic versions of Crossville's product brochures. So whether you need information about Crossville products or tile in general, please visit us at [CrossvilleInc.com](http://CrossvilleInc.com).

## Our Warranty

Crossville Inc. guarantees that its products will meet or exceed the performance specifications outlined in ANSI A137.1-2022 and in the performance data section of the Crossville, Inc. general product catalog. For complete details check our website at [CrossvilleInc.com](http://CrossvilleInc.com).



AV342 ▶ Steel Gaze 12 x 24

## Trade Organizations



## Environmentally Aware

