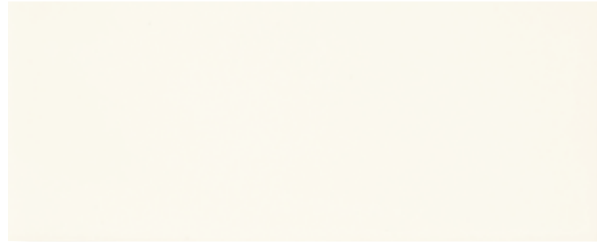


Handwritten

Wall Tile

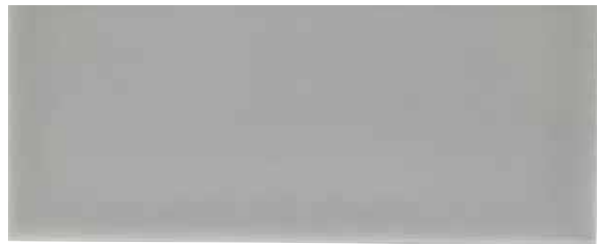
Colors



HWR01 ▶ Unscripted



HWR02 ▶ Post Card



HWR03 ▶ Private Affair



HWR04 ▶ Dear Sir



HWR05 ▶ Par Avon



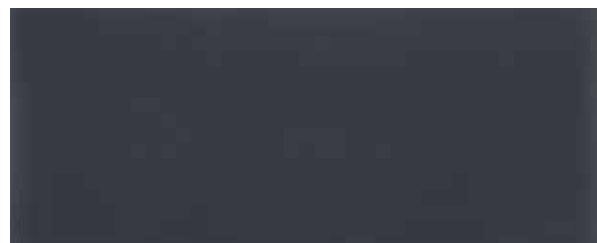
HWR06 ▶ Pen Pal



HWR07 ▶ Gold Leaf



HWR08 ▶ Love Letter



HWR09 ▶ InkWell

Features and Benefits

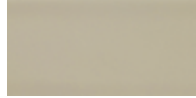
- Elegant shapes that interact for design options
- Beautiful array of 9 colors
- 12 x 12 mosaics that work with pickets for unique patterns
- Variety of trim pieces to complete your design
- Globally Sourced



Handwritten

Wall Tile

Sizes Available in all colors



3 x 6



3 x 12



3 x 6 Gothic Picket



3 x 6 Picket



Diamond Mosaic



Leaf Mosaic



HWR07 ▶ Gold Leaf 3 x 6 Gloss

Sizes & Finishes

Field Tile

Nominal (in)	Thickness (in)	Finish
3 x 6	3/8	Gloss
3 x 12	3/8	Gloss
3 x 6 Picket	3/8	Gloss
3 x 6 Gothic Picket	3/8	Gloss

Crossville recommends a 1/8 to 1/4 inch grout joint.

Mosaics

Nominal (in)	Thickness (in)	Finish
Diamond Mosaic	3/8	Gloss
Leaf Mosaic	3/8	Gloss

Mesh mounted on a 12 x 12 sheet.

Coordinating Trim

Nominal (in)	Thickness (in)	Finish
1/2 x 6 Arrow Liner	5/8	Gloss
1/2 x 6 Dome Liner	5/8	Gloss
2-1/2 x 6 Chair Rail	3/4	Gloss
3 x 6 Bullnose	3/8	Gloss
3 x 3 Bullnose Corner	3/8	Gloss



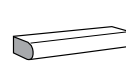
3 x 3 Bullnose Corner



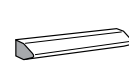
3 x 6 Bullnose



2-1/2 x 6 Chair Rail



1/2 x 6 Dome Liner



1/2 x 6 Arrow Liner

Product Performance

Breaking Strength	>500 lbf	ASTM C648
Chemical Resistance	Unaffected	ASTM C650
Water Absorption	10-15%	ASTM C373
Scratch Hardness	6	Mohs Scale

Shade & Texture Index

Handwritten has a shade variation of V3.

V1



V2



V3



V4



V1 Uniform appearance

V2 Slight Variation

V3 Moderate Variation

V4 Substantial Variation

This tile product is produced with a V3 variation. Expect that the amount of color and texture on each piece may vary significantly. Inspect the product upon delivery and for best results, blend tile from several cartons during installation.

Application Areas

Finish	Interior Floors (dry)	Interior Walls (wet/dry)	Exterior Walls	Interior Floors (Standing water/shower floors)	Exterior/Paving	Pool/Fountain Full Lining**	Water Line Pool/Fountains
Gloss		✓					

For more information on ANSI- A362.3 visit our website at <https://www.crossvilleinc.com/Resources/Tile-101/DCOF?tab=1>



Handwritten

Crossville, Inc.

PO Box 1168
Crossville, TN
38557

Phone 931.484.2110
Fax 931.456.2956
E-Mail Crossc@CrossvilleInc.com
Web CrossvilleInc.com

Recommended Use

Crossville® recommends Handwritten tile for interior vertical surfaces in all residential and light commercial applications. Applications may include light-duty bathroom walls, vanity tops, kitchen backsplashes, and light duty kitchen countertops.

Handcrafted Variation

Handwritten tiles are manufactured to appear handmade. Due to this handmade appearance, variations in size, thickness, flatness and color are to be expected. Therefore, blending the tile before and during installation is recommended.

Information listed here is subject to change. Please refer to CrossvilleInc.com for the latest, most accurate information.

Care and Maintenance

Regular cleaning is the best way to keep Handwritten tile looking good for years to come. Use clean, hot water (combined with a household cleaner for more aggressive cleaning). Rinse thoroughly and dry with a soft cloth to prevent water spots. No waxes or sealers are needed. More information regarding the care and maintenance of Crossville® products is available at CrossvilleInc.com.

Our Warranty

Crossville Inc. guarantees that its products will meet or exceed the performance specifications outlined in ANSI A137.1- 2022 and in the performance data section of the Crossville, Inc. general product catalog. For complete details check our website at CrossvilleInc.com.

▶▶ Crossville® Sample Express

Visit the website to learn more:
CrossvilleInc.com/Products/Handwritten

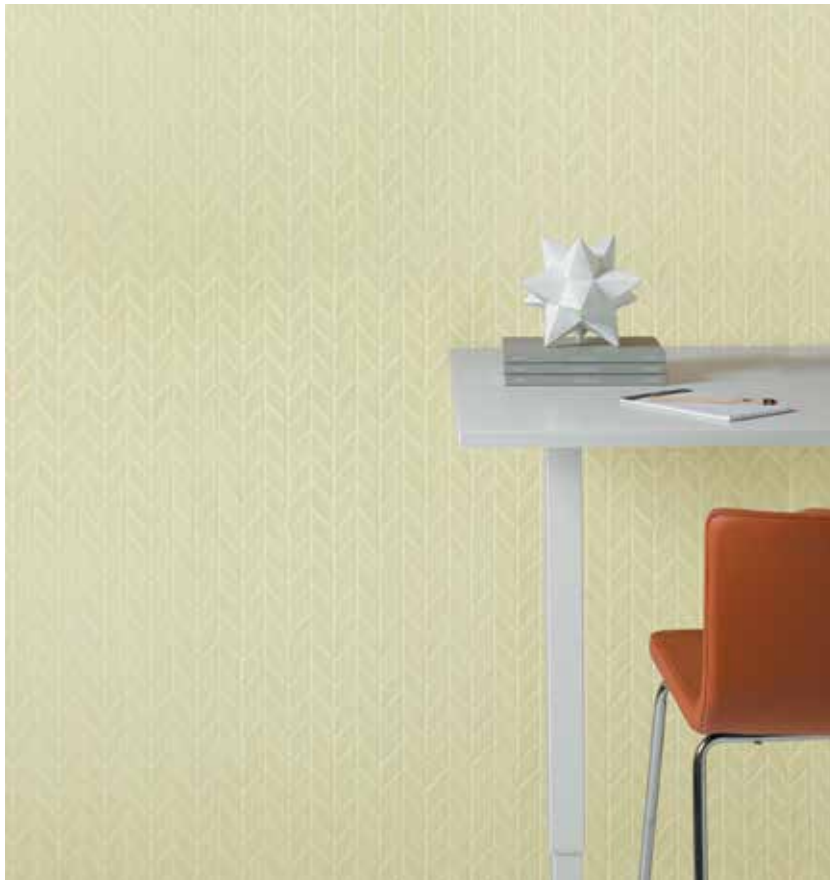
Loose Samples for
Architects & Designers

Loose Tile Samples
Sizes may vary depending on product series
Max. of 4 large field tile per order

Standard Shipping
FedEX Ground

CrossvilleInc.com

If you want a better idea of what Crossville tile would look like in a particular room setting, simply visit our website and click on Cross-Vision. This powerful software tool allows you to visualize different types of Crossville tile. In addition, you'll find comprehensive information about Crossville's entire portfolio of products. You can also learn about the latest styles and trends from industry experts, download detailed care and maintenance instructions for our various products, or browse electronic versions of Crossville's product brochures. So whether you need information about Crossville products or tile in general, please visit us at CrossvilleInc.com.



HWR06 ▶ Pen Pal Diamond Mosaic Gloss

Trade Organizations



Environmentally Aware

