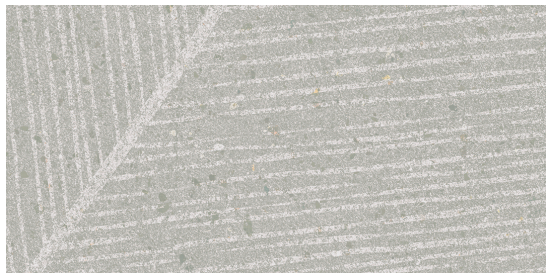


Sand Garden™

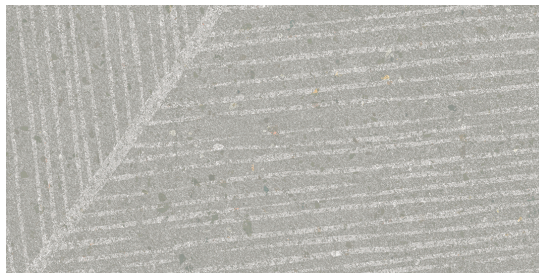
Porcelain Stone®



Available Colors



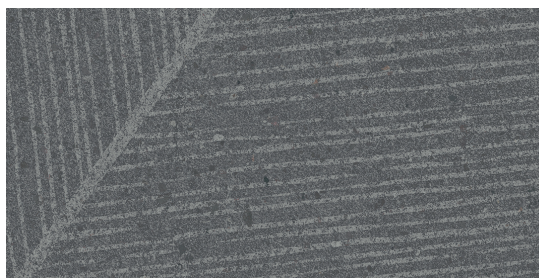
SDG01 ▶ Contemplative Cream



SDG02 ▶ Meditative Mushroom



SDG03 ▶ Thoughtful Taupe

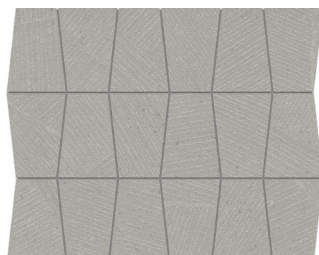


SDG04 ▶ Profound Pewter

Available Mosaics



3 x 3 Stacked Mosaics
(available in all colors)



11 x 14 Trapezoid Mosaics
(available in all colors)

Embrace Nature's Tranquility with Sand Garden™ Porcelain Tiles

Bringing nature indoors has never been more essential—for both well-being and design. **Sand Garden™** porcelain tiles from Crossville capture the serene essence of dry gardens, infusing interiors with organic beauty and timeless appeal.

Features and Benefits

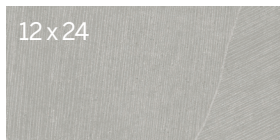
- Crafted with **Visual Touch™** technology, each tile's textured surface plays with light, creating dynamic visual effects that shift throughout the day. The artful imperfections of tone and texture reflect a wabi-sabi aesthetic, celebrating the elegance of nature's simplicity.
- Available in four soothing colors and both unpolished and semi-polished finishes, Sand Garden includes 12x24 and 24x24 porcelain tiles.
- Expand your design options with cove base and bullnose trim along with 3x3 stacked and Trapezoid mosaics that are perfect for shower pans and pool lines
- Proudly made in the USA and **Green Squared®** Certified
- Transform your space with the calming presence of Sand Garden—where nature, artistry, and design come together in perfect harmony.

Sand Garden™

Porcelain Stone®



Sizes



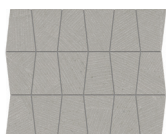
12 x 24



24 x 24



3 x 3 Stacked
Mosaics
Mounted on a
297 x 297 sheet



11 x 14 Trapezoid
Mosaics
Mounted on a
286 x 355 sheet

Sizes & Finishes

Field Tile - Rectified

Available in all colors

Nominal (in)	Actual (mm)	Thickness (mm)	Grout Joint (mm)	Finish
12 x 24	297 x 597	9.5	3.0	UPS/SPO
24 x 24	597 x 597	9.5	3.0	UPS/SPO

Note: Field tile is rectified with a 3mm grout joint

Mosaics

Available in all colors

Nominal (in)	Sheet Size (mm)	Thickness (mm)	Grout Joint (mm)	Finish
3 x 3 Stacked*	297 x 297	9.5	3.0	UPS
Trapezoid**	286 x 355	9.5	2.0	UPS

* Mounted on 12 x 12 sheet (coverage area 0.97sf) ** Mounted on 11 x 14 sheet (coverage area 1.3285sf)

Coordinating Trim

Available in all colors

Nominal (in)	Actual (mm)	Thickness (mm)	Grout Joint (mm)	Finish
4 x 24 Single Bullnose	97 x 597	9.5	3.0	UPS/SPO
6 x 12 Cove Base*	150 x 297	9.5	3.0	UPS

*Cove Base does not have Visual Touch Technology



4 x 24 Single
Bullnose



6 x 12 Cove Base*

Product Performance

Water Absorption	<0.5%	ASTM C373
Breaking Strength	>450 lbf	ASTM C648
Bond Strength	>200 psi	ASTM C482
Facial dimension	±0.10%	ASTM C499
Range of Thickness (In)	0.025	ASTM C499
Warpage - diagonal	±0.20%	ASTM C485
Wedging	±0.25%	ASTM C502
Frost (Freeze/Thaw) Resistance	Resistant	ASTM C1026
Chemical Resistance	Unaffected	ASTM C650
Stain Resistance	Unaffected	ASTM C1378
Crazing Resistance	Resistant	ASTM C424
Thermal Shock Resistance	Resistant	ASTM C484
MOHs Scratch Hardness	7	Mohs Scale

Wet Dynamic Coefficient of Friction Range

UPS	0.50 - 0.60	ANSI A326.3
SPO	0.42 - 0.52	ANSI A326.3

Shade & Texture Index

Sand Garden has a shade variation of V3.

V1	V2	V3	V4	V1 Uniform appearance
				V2 Slight Variation
				V3 Moderate Variation
				V4 Substantial Variation

This porcelain tile product is produced with a V3 variation. Expect that the amount of color and texture on each piece may vary significantly. Inspect the product upon delivery and for best results, blend tile from several cartons during installation.

Get Planked!

Our Porcelain Stone® products are available in popular plank shapes with no minimum order and quick fulfillment.

See website for more details and sizes.



©2025 AHF, LLC. The Green Squared trademark is owned by the Tile Council of North America, Inc. All other trademarks are owned by AHF, LLC, or its subsidiaries or affiliates. | Printed in USA.
NOTE: Due to printing limitations, colors pictured cannot be guaranteed to match actual material.



Applications

For Application Area information- please visit Crossville.com

Recommended Use

Sand Garden™ is recommended for interior floors dry, interior walls, countertops, exterior walls, pool waterlines and full linings† in both residential and commercial applications. Sand Garden is not recommended for exterior horizontal surfaces or exterior paving. Sand Garden is recommended for interior or exterior floors and walls in both residential and commercial applications. See Crossville.com for detailed installation instructions.

† Excludes mesh mounted mosaics.

Care and Maintenance

Regular cleaning is the best way to keep Sand Garden tile looking good for years to come. Use clean, hot water (combined with a household cleaner for more aggressive cleaning). Rinse thoroughly and dry with a soft cloth. No waxes are needed. More information regarding the care and maintenance of Crossville products is available at Crossville.com.

Wet area use for Mosaics

Crossville® produces the Sand Garden 3x3 Stacked Mosaic and Trapezoid Mosaics with the UPS finish. The ANSI A326.3 wet Dynamic COF of Sand Garden is ≥ 0.50 . Their small sizes ensure frequent grout joints which provides traction and drainage. Crossville cannot control situations involving incorrect installation, improper slope to the drain for elimination of standing water and poor surface cleaning.

This information is provided so that customers may make a realistic and informed decision when comparing Sand Garden to other tile products in wet area environment, such as residential/commercial bathrooms, showers, and interior pool decks.

Our Warranty

Crossville® guarantees that its products will meet or exceed the performance specifications outlined in ANSI A137.1 and in the performance data section of the Crossville® general product catalog. For complete details check our website at Crossville.com.

Information listed here is subject to change. Please refer to Crossville.com for the latest, most accurate information.

Crossville® Sample Express

Complimentary Samples are available at Crossville.com/products/sand-garden

Loose Tile Samples

Sizes may vary depending on product series
Max. of 4 large field tile per order

Standard Shipping

FedEx Ground

Crossville.com

You'll find comprehensive information about Crossville's entire portfolio of products. You can also learn about the latest styles and trends from industry experts, download detailed care and maintenance instructions for our various products, or browse electronic versions of Crossville's product brochures. So whether you need information about Crossville products or tile in general, please visit us at Crossville.com. Information listed here is subject to change.



Trade Organizations



Environmentally Aware

